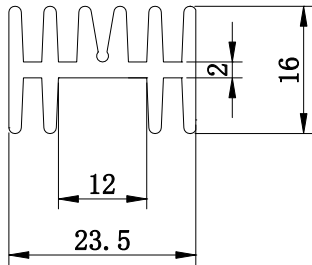
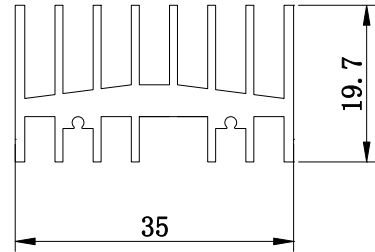


(1). 16S23



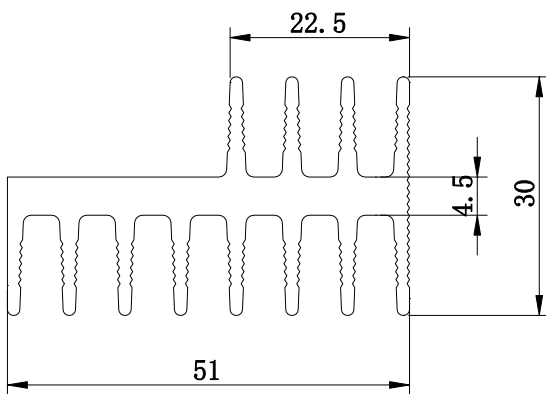
断面积 (mm <sup>2</sup> )	周长 (mm)	线密度 (kg/m)
180	180	0.47

(2). 19S35



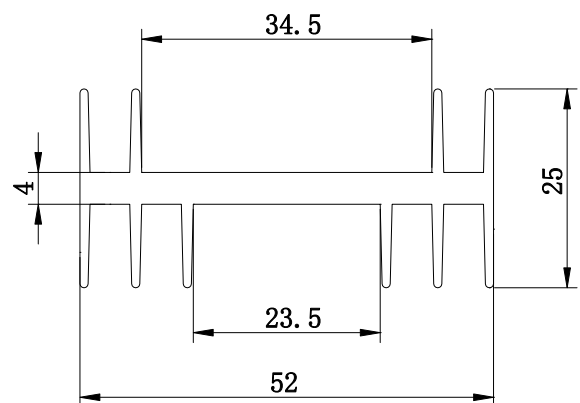
断面积 (mm <sup>2</sup> )	周长 (mm)	线密度 (kg/m)
285	330	0.77

(3). 30S50



断面积 (mm <sup>2</sup> )	周长 (mm)	线密度 (kg/m)
520	415	1.4

(4). 25S52



断面积 (mm <sup>2</sup> )	周长 (mm)	线密度 (kg/m)
334	314	0.95