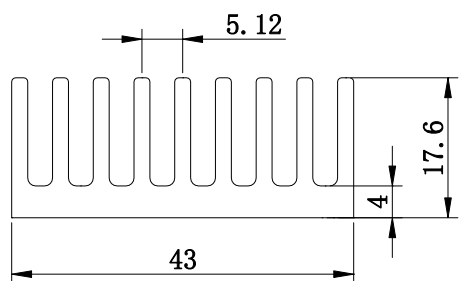
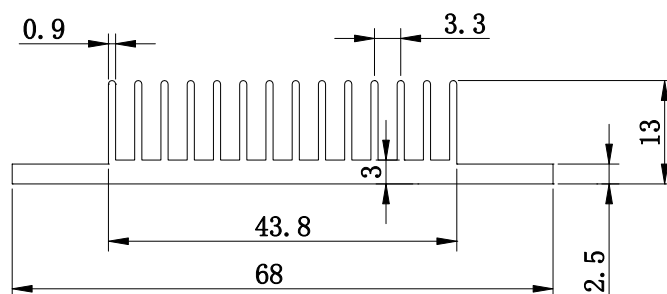


(117). 17DQ43



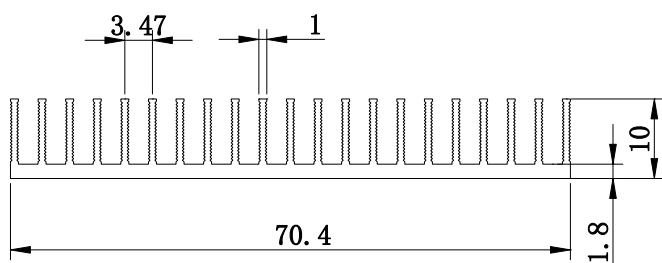
断面积(mm ²)	周长(mm)	线密度(kg/m)
462	328	1.25

(118). 13D68



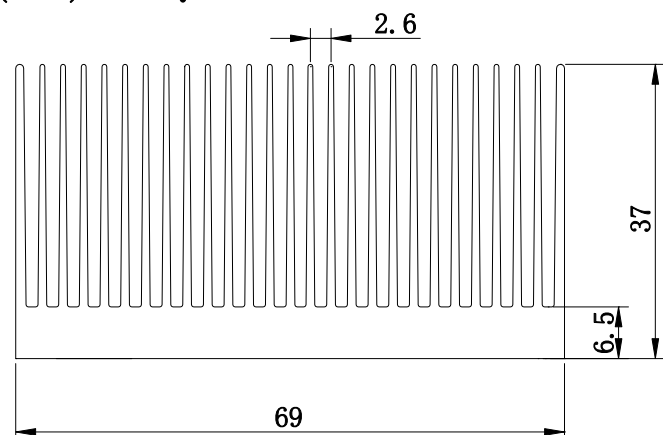
断面积(mm ²)	周长(mm)	线密度(kg/m)
348	416	0.94

(119). 10DQ70



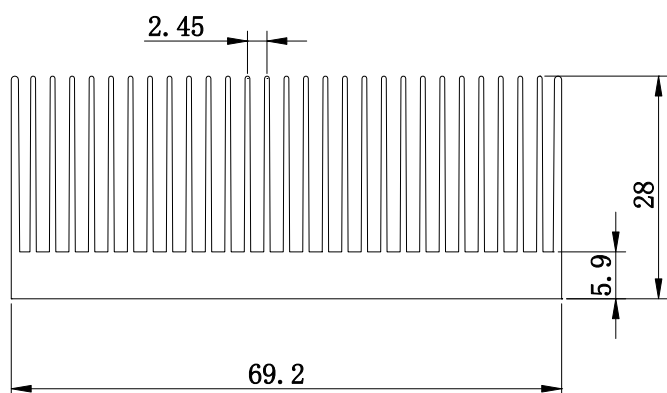
断面积(mm ²)	周长(mm)	线密度(kg/m)
300	621	0.81

(120). 37DQ69



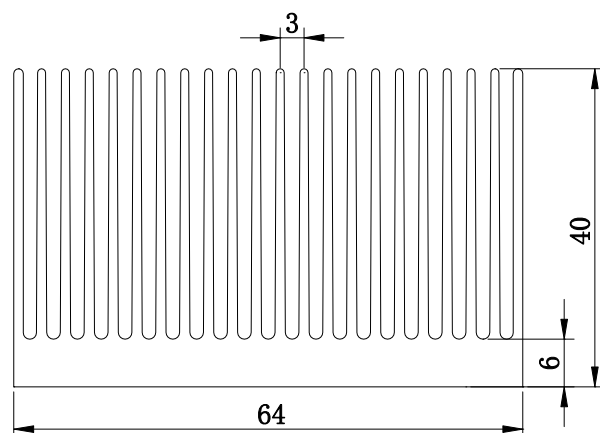
断面积(mm ²)	周长(mm)	线密度(kg/m)
1307	1771	3.53

(121). 28DQ69



断面积(mm ²)	周长(mm)	线密度(kg/m)
963	1419	2.6

(122). 40DQ64



断面积(mm ²)	周长(mm)	线密度(kg/m)
1313	1606	3.54