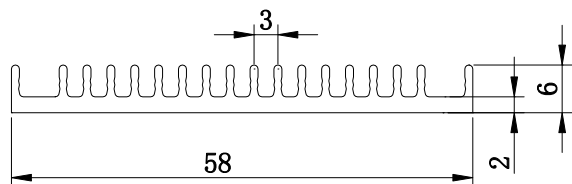
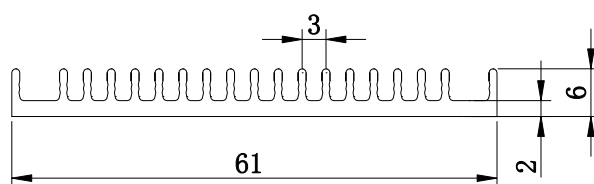


(105). 6DQ58



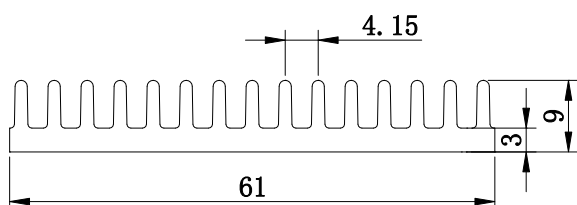
断面积(mm <sup>2</sup> )	周长(mm)	线密度(kg/m)
205	250	0.55

(106). 6DQ61



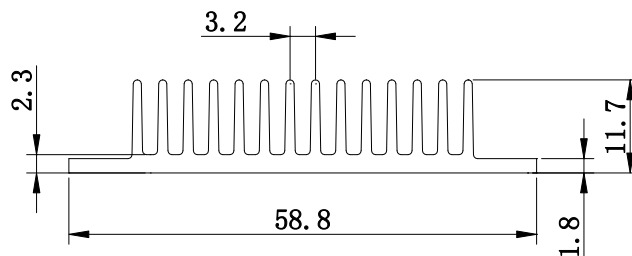
断面积(mm <sup>2</sup> )	周长(mm)	线密度(kg/m)
215	263	0.58

(107). 9DQ61



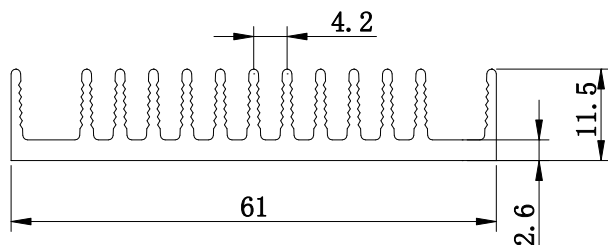
断面积(mm <sup>2</sup> )	周长(mm)	线密度(kg/m)
360	290	0.97

(108). 12DQ59



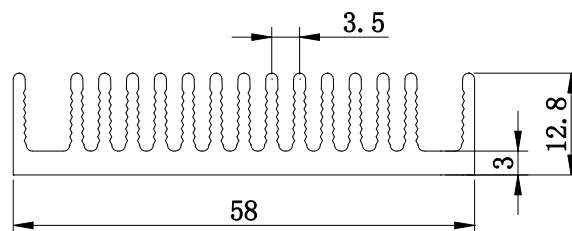
断面积(mm <sup>2</sup> )	周长(mm)	线密度(kg/m)
310	370	0.84

(109). 11DQ61



断面积(mm <sup>2</sup> )	周长(mm)	线密度(kg/m)
334	363	0.90

(110). 13DQ58



断面积(mm <sup>2</sup> )	周长(mm)	线密度(kg/m)
430	416	1.16