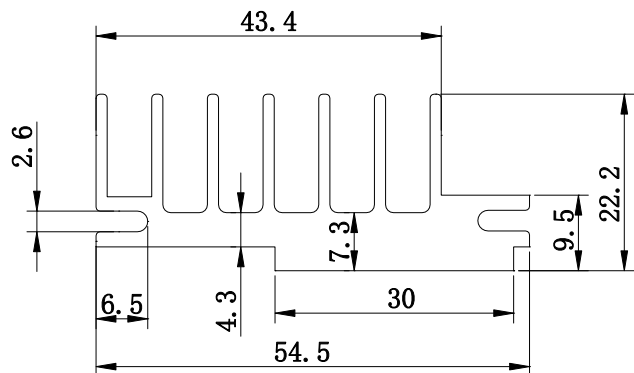
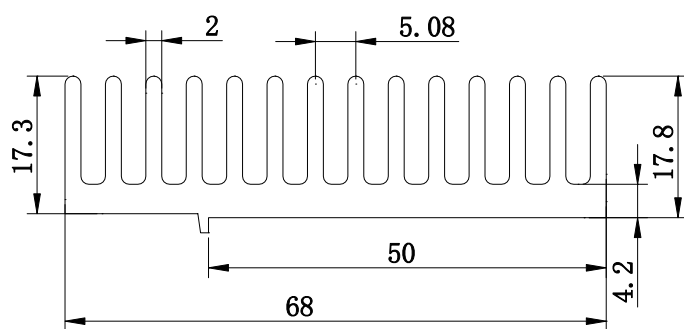


(96). 22D54



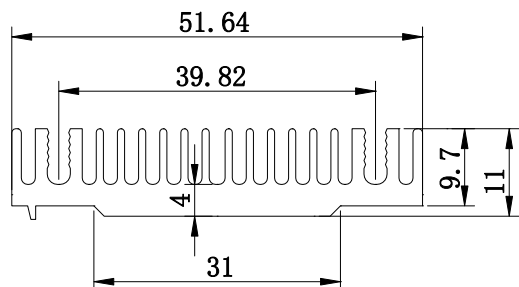
断面积(mm <sup>2</sup> )	周长(mm)	线密度(kg/m)
523	350	1.41

(97). 17DQ68



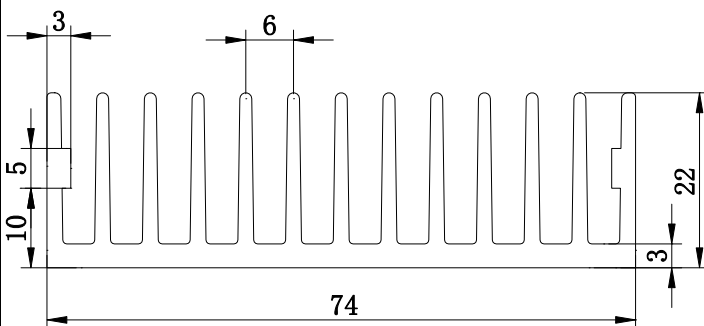
断面积(mm <sup>2</sup> )	周长(mm)	线密度(kg/m)
726	506	1.96

(98). 11DQ51



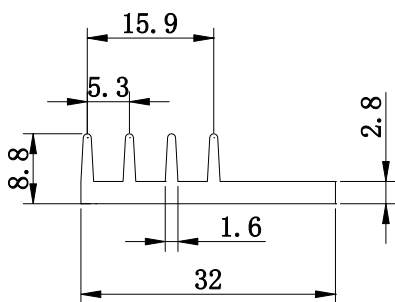
断面积(mm <sup>2</sup> )	周长(mm)	线密度(kg/m)
352	350	0.95

(99). 22DQ74



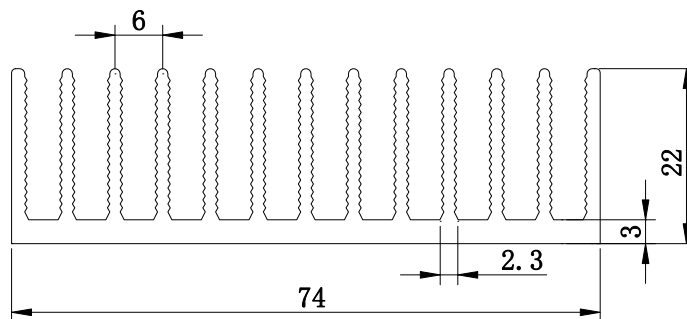
断面积(mm <sup>2</sup> )	周长(mm)	线密度(kg/m)
700	633	1.9

(100). 9D32



断面积(mm <sup>2</sup> )	周长(mm)	线密度(kg/m)
120	113	0.33

(101) 22DQ74A



断面积(mm <sup>2</sup> )	周长(mm)	线密度(kg/m)
685	700	1.85