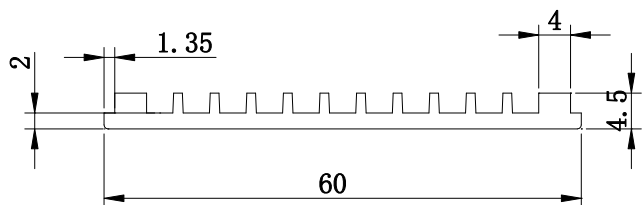
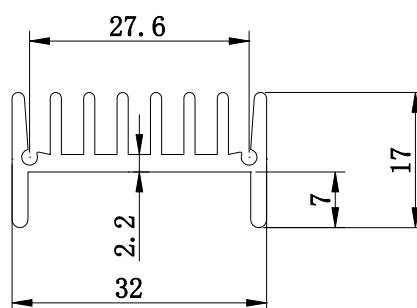


(7). 5D60



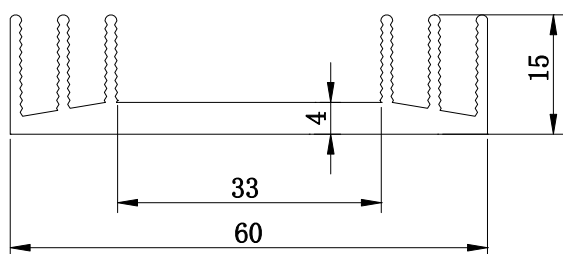
断面积 (mm <sup>2</sup> )	周长 (mm)	线密度 (kg/m)
196	182	0.53

(8). 17D32



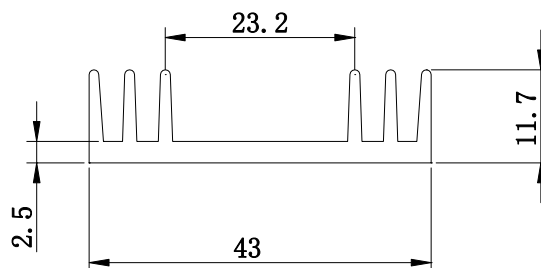
断面积 (mm <sup>2</sup> )	周长 (mm)	线密度 (kg/m)
183	220	0.51

(9). 15D60



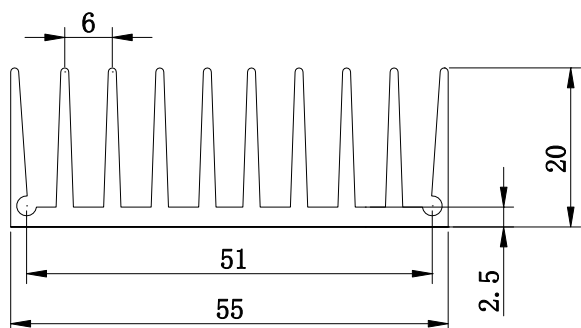
断面积 (mm <sup>2</sup> )	周长 (mm)	线密度 (kg/m)
342	280	0.92

(10). 12D43



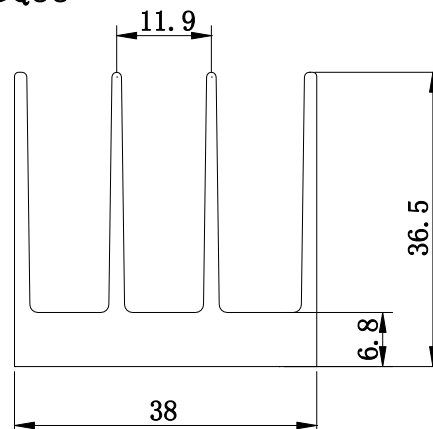
断面积 (mm <sup>2</sup> )	周长 (mm)	线密度 (kg/m)
196	193	0.56

(11). 20DQ55



断面积 (mm <sup>2</sup> )	周长 (mm)	线密度 (kg/m)
483	414	1.37

(12). 36DQ38



断面积 (mm <sup>2</sup> )	周长 (mm)	线密度 (kg/m)
490	324	1.31